

Boundary Adjustment Committee

FINAL RECOMMENDATIONS

...

September 20, 2016

*College
Station
Independent
School
District*



Demographic
Study
Spring 2016


TEMPLETON
DEMOGRAPHICS

*Learn from Yesterday...
Understand Today...
Plan for Tomorrow*

- Contracted (November 2015)
- Data Collection (December 2015 - February 2016)
- Board Presentation (February 2016)
- Boundary Adjustment Committee (April -May 2016)
- Boundary Adjustment Committee (September 2016)

PROCESS & TIMELINE

Templeton Demographics

Board Sought Community Input

Board Parameters

Boundary Adjustment Committee

Community Feedback

Boundary Adjustment Committee

Community Input/Forums

- April 6
- April 12
- feedback@csisd.org



FEEDBACK

BOARD PARAMETERS - April 18th

COMPARABILITY

GROWTH

***CURRENT
FACILITIES***

***MIDDLE SCHOOL
SPLITS***

PROCESS & TIMELINE

Templeton Demographics

Board Sought Community Input

Board Parameters

Boundary Adjustment Committee

Community Feedback

Boundary Adjustment Committee

Boundary Adjustment Committee

- 6 meetings (April 28-May 31)
 - Attendance Zones Grades 5-8
 - Attendance Zones Grades 9-12
 - Implementation Grades 9-12 Zones
 - Grandfathering



Initial Recommendation

PROCESS & TIMELINE

Templeton Demographics

Board Sought Community Input

Board Parameters

Boundary Adjustment Committee

Community Feedback

Boundary Adjustment Committee



- September 6
- September 7
- September 12



PROCESS & TIMELINE

Templeton Demographics

Board Sought Community Input

Board Parameters

Boundary Adjustment Committee

Community Feedback

Boundary Adjustment Committee

Boundary Adjustment Committee

2 meetings (September 12, 14)

- **September 12 Meeting**
 - **Amend Grades 9-12 Grandfathering**
 - **31-0 vote**
 - **Continuity Discussion**
 - **Request for Info for 9/14**
 - **Nantucket to OW/AMCMS/Consol**

PROCESS & TIMELINE

Templeton Demographics

Board Sought Community Input

Board Parameters

Boundary Adjustment Committee

Community Feedback

Boundary Adjustment Committee

Boundary Adjustment Committee

September 14 Meeting

- **Continued Discussion on Continuity**
 - **Option 1**
 - **PT/ MS #3/CSHS**
 - **Option 2 (BAC Initial Rec)**
 - **OW/ AMCMS/ CSHS**
 - **Option 3**
 - **OW/AMCMS/AMCHS**

PROCESS & TIMELINE

Templeton Demographics

Board Sought Community Input

Board Parameters

Boundary Adjustment Committee

Community Feedback

Boundary Adjustment Committee

Boundary Adjustment Committee

September 14 Meeting

- Continued Discussion on Continuity
 - Option 1
 - PT/ MS #3/CSHS
 - ~~Option 2 (BAC Initial Rec)~~
 - ~~OW/AMCMS/CSHS~~
 - Option 3
 - OW/AMCMS/AMCHS

Option 2 Eliminated (26-4)

PROCESS & TIMELINE

Templeton Demographics

Board Sought Community Input

Board Parameters

Boundary Adjustment Committee

Community Feedback

Boundary Adjustment Committee

Boundary Adjustment Committee

September 14 Meeting

- **Option 1**
 - **PT/ MS #3/CSHS**
- **Option 3**
 - **OW/AMCMS/AMCHS**

Option 1 - 18 votes

Option 3 - 14 votes

PROCESS & TIMELINE

Templeton Demographics

Board Sought Community Input

Board Parameters

Boundary Adjustment Committee

Community Feedback

Boundary Adjustment Committee

Boundary Adjustment Committee

FINAL RECOMMENDATIONS

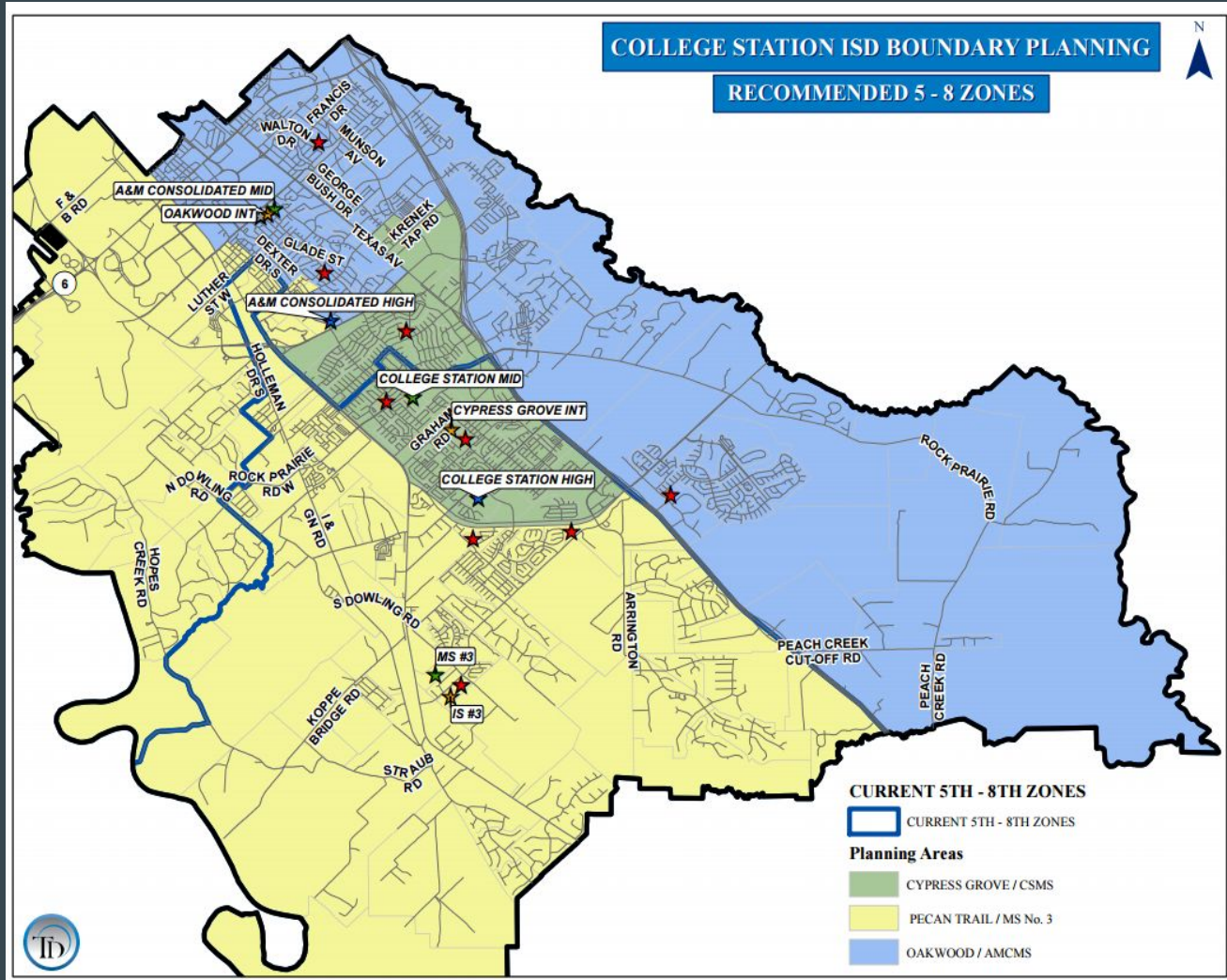
...

GRADES 5-8

CHANGES from ORIGINAL
RECOMMENDATION

NANTUCKET AREA
removed from
OW/AMCMS Zone

NANTUCKET AREA ***placed***
in
PT/MS #3 Zone



GRADES 5-8 COMPARABILITY

CAMPUS	LOW SES % (MAY 2016)	RECOMMENDATION
OAKWOOD	46.8%	36.8%
CYPRESS GROVE	24.8%	35.1%
PECAN TRAIL	N/A	36.4%



CAMPUS	LOW SES % (MAY 2016)	RECOMMENDATION
AMCMS	45.8%	36.0%
CSMS	21.7%	32.8%
MS #3	N/A	33.2%

GRADES 5-8 GROWTH/FACILITIES

SCHOOL	17/18	18/19	19/20	20/21	21/22	22/23	23/24	24/25
OAKWOOD	651	669	702	686	684	685	700	714
CYPRESS GROVE	786	852	868	859	855	870	875	882
PECAN TRAIL	677	753	776	788	794	835	858	888



SCHOOL	18/19	19/20	20/21	21/22	22/23	23/24	24/25
A&M CONSOLIDATED MS	625	654	694	754	718	715	727
COLLEGE STATION MS	777	811	865	891	881	871	891
MIDDLE SCHOOL #3	718	815	912	<u>936</u>	<u>939</u>	<u>958</u>	<u>1002</u>

MIDDLE SCHOOL SPLIT

AMCMS	7-8 GRADE %
AMCHS	84%
CSHS	16%

CSMS	7-8 GRADE %
AMCHS	48%
CSHS	52%

MS #3	7-8 GRADE %
AMCHS	18%
CSHS	82%

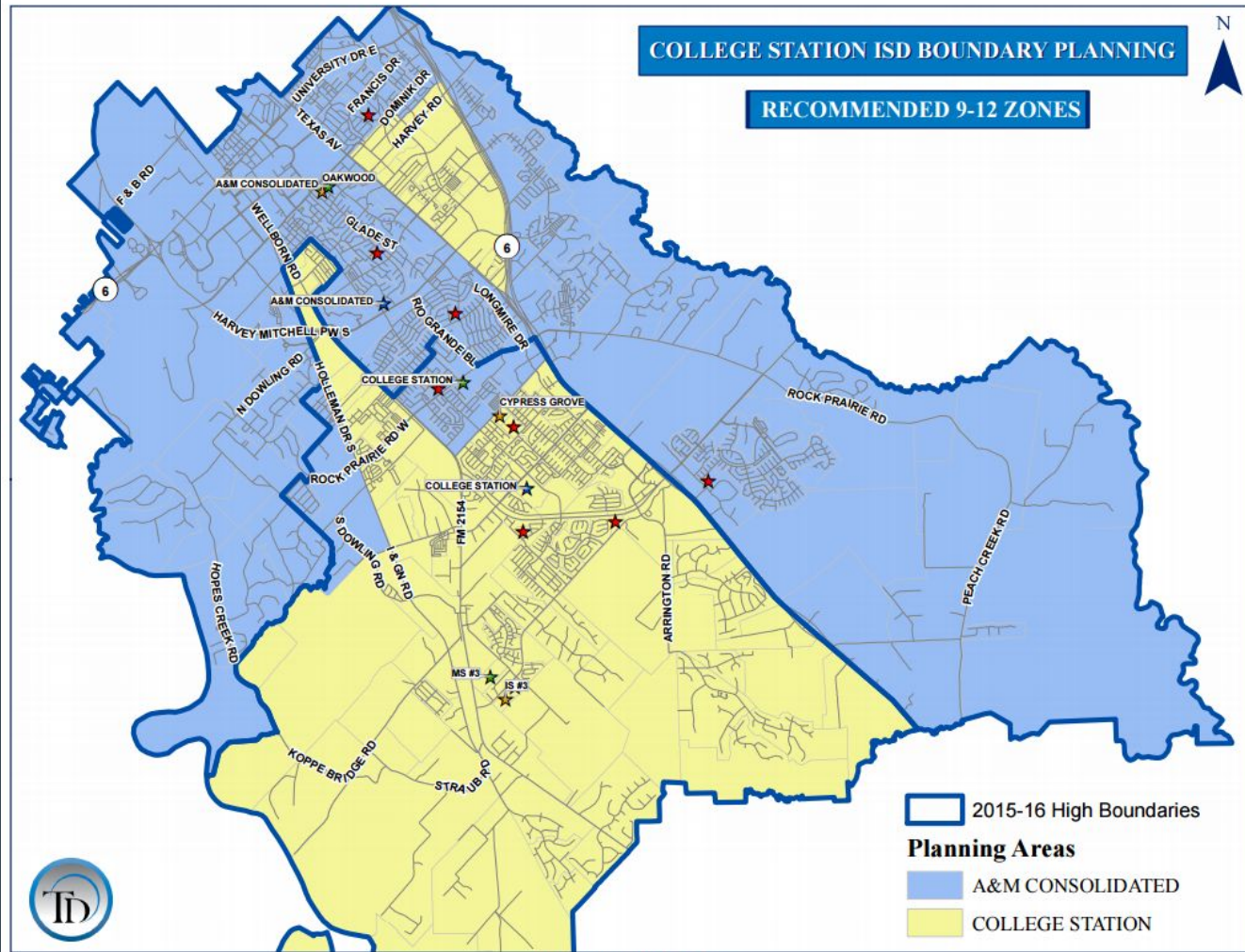
Boundary Adjustment Committee

FINAL RECOMMENDATIONS

...

GRADES 9-12

NO CHANGES
from ORIGINAL
RECOMMENDATION



GRADES 9-12 COMPARABILITY

CAMPUS	LOW SES % (MAY 2016)	RECOMMENDED
AMCHS	35.9%	29.6%
CSHS	19.7%	29.0%

GRADES 9-12 GROWTH/FACILITIES

SCHOOL	17/18	18/19	19/20	20/21	21/22	22/23	23/24	24/25
AMCHS	1965	2026	2110	2216	2335	<u>2487</u>	<u>2621</u>	<u>2739</u>
CSHS	1873	1982	2141	2289	<u>2477</u>	<u>2652</u>	<u>2804</u>	<u>2934</u>

Boundary Adjustment Committee

FINAL RECOMMENDATIONS

...

GRANDFATHERING

GRANDFATHERING

GRADES 5-8

NO CHANGES

from ORIGINAL RECOMMENDATION

The recommendation is for students who are entering their last year at an intermediate or middle school when the zones take effect may elect to grandfather for one year. These students could stay at their current school for the final year if they can provide their own transportation.

GRADES 9-12

CHANGES

from ORIGINAL RECOMMENDATION

The recommendation is for students entering their sophomore, junior or senior year when the new zones take effect in August 2017 may elect to grandfather. These students could stay at their current school through graduation if they can provide their own transportation. High school younger siblings of sophomores, juniors and seniors who elect to grandfather in 2017-2018 are eligible to grandfather as well and may elect to stay at the school until graduation if they can provide their own transportation. Any siblings younger than high school age in 2017-2018 are not eligible to grandfather.

Boundary Adjustment Committee

FINAL RECOMMENDATIONS

...

COMMENTS/QUESTIONS?